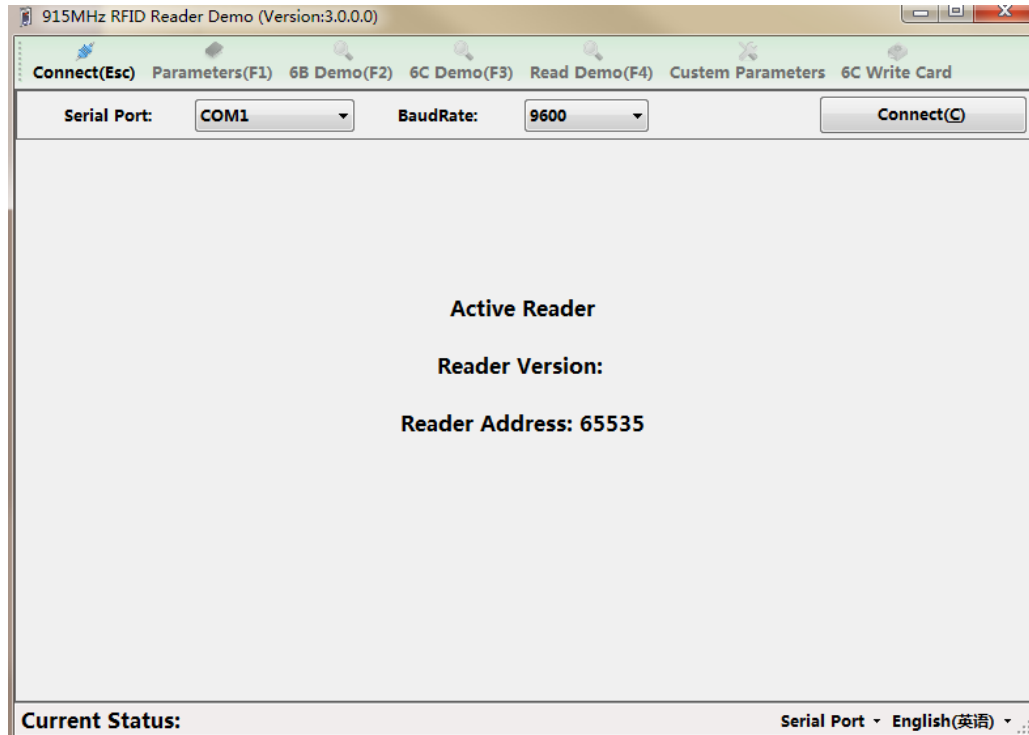
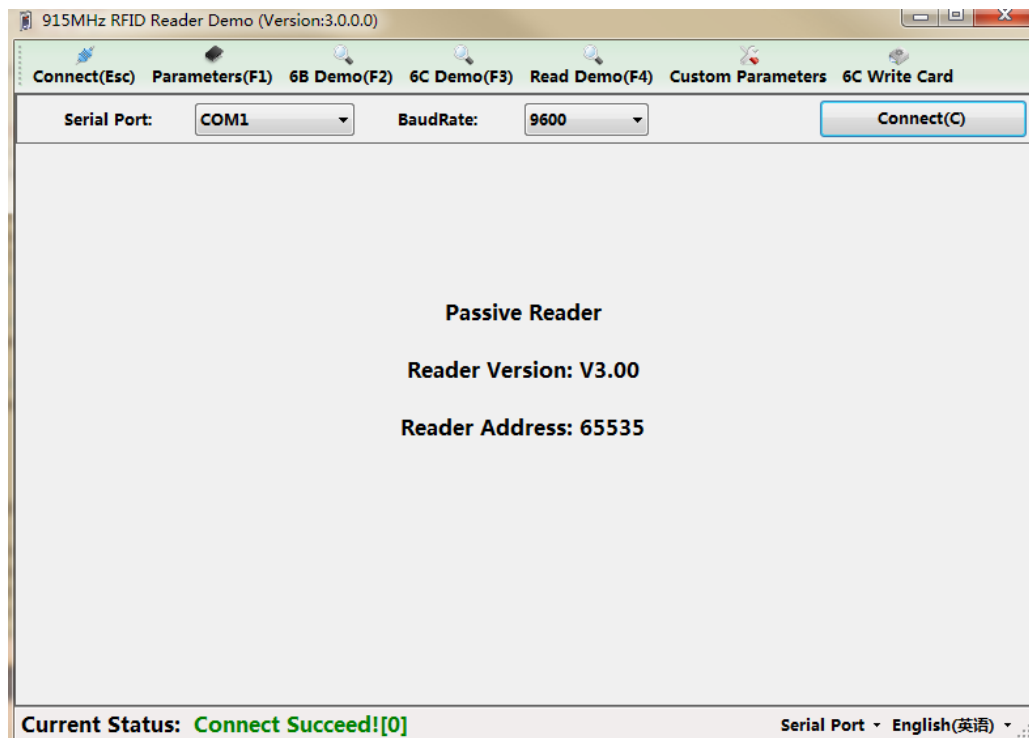


Reader TCPIP Configuration

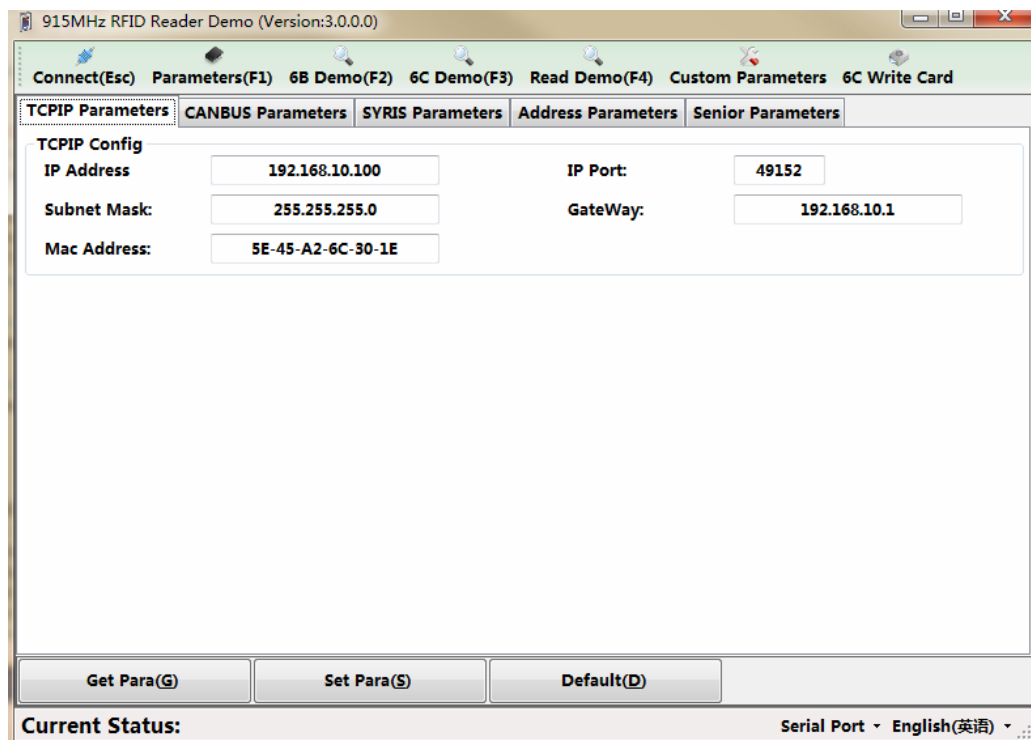
1. Connect reader to the computer with serial port (make sure the right connections, and obtain the computer serial number);
2. Open the “新无源读卡器演示程序(New Passive Demo).exe”;



3. Choice the right serial port, choice 9600 baud rate, and then press the “Connect” button;



4. Press “Custom Parameters”;



- Choice the TCPIP Parameters interface; and edit the parameters;

TCPIP Config	
IP Address	192.168.10.100
Subnet Mask	255.255.255.0
Mac Address	5E-45-A2-6C-30-1E
IP Port	49152
GateWay	192.168.10.1

- press "Set Para" button;
- if the current status show green than said set success, else said set fail;

Current Status: **Set Tcpip Succeed![0]** Serial Port English(英语)

- try again if set fail;